



Thaw and Culture Details

Cell Line Name	JHU063i
WiCell Lot Number	DB41105
Provider	Johns Hopkins University – Laboratory of Dr. Lewis Becker
Banked By	Johns Hopkins University – Laboratory of Dr. Lewis Becker
Thaw and Culture Recommendations	WiCell recommends thawing 1 vial into 4 wells of a 6 well plate. WiCell recommends thawing using ROCK Inhibitor for best results.
Culture Platform	Feeder Independent
	Medium: E8
	Matrix: Vitronectin
Protocol	WiCell Feeder Independent E8 Medium Protocol
Passage Number	p6 These cells were cultured for 6 passages post reprogramming prior to freeze. Add +1 to the passage number to best represent the overall passage number of the cells at thaw.
Date Vialied	04-June-2016
Vial Label	P063 P6 6/4/16 0.7M
Biosafety and Use Information	This cell line is of human origin. Appropriate biosafety precautions should be followed when working with these cells. The end user is responsible for ensuring that the cells are handled and stored in an appropriate manner. WiCell is not responsible for damages or injuries that may result from the use of these cells. Cells distributed by WiCell are intended for research purposes only and are not intended for use in humans.

Testing Performed by WiCell

Test Description	Test Provider	Test Method	Test Specification	Result
Karyotype by G-banding	WiCell	SOP-CH-003	Expected karyotype	See Report
	<p>Results: 46,XX 47,XX,+8 47,XX,+i(1)(q10) 48,XX,+X,+X Interpretation: This is a normal karyotype; no clonal abnormalities were detected at the stated band level of resolution. There are nonclonal findings, listed above, which contain chromosomal aberrations (gain of chromosome 8, 1q, and X) recurrently acquired in pluripotent stem cell cultures. An additional twenty cells were examined for these chromosomal aberrations; they were not observed. Nonclonal findings may result from technical artifact, but may be due to a developing clonal abnormality or to low-level mosaicism.</p>			
Post-Thaw Viable Cell Recovery	WiCell	SOP-CH-305	Recoverable attachment after passage	Pass
Identity by STR	UW Translational Research Initiatives in Pathology Laboratory	PowerPlex 16 HS System by Promega	Defines profile	Pass
Sterility	Steris	ST/07	Negative	Pass
Mycoplasma	WiCell	SOP-CH-044	Negative	Pass



Testing Reported by Provider

The Provider stated that some or all of the additional analyses listed below may have been performed for this cell line. For more information, publication and dbGaP links, where available, are provided on the cell line specific web page on the WiCell website.

- Embryoid bodies
- Infinium® Expanded Multi-Ethnic Genotyping Array (MEGA^{EX})

Approval Date	Quality Assurance Approval
26-August-2016	<p style="text-align: right;">7/18/2019</p> <p>X JKG</p> <p><small>JKG Quality Assurance Signed by: Gay, Jenna</small></p>



Chromosome Analysis Report: 077292

Date Reported: Tuesday, July 2, 2019

Cell Line: JHU063i-DB41105 14829

Passage#: 7

Date of Sample: 6/20/2019

Specimen: Human IPS

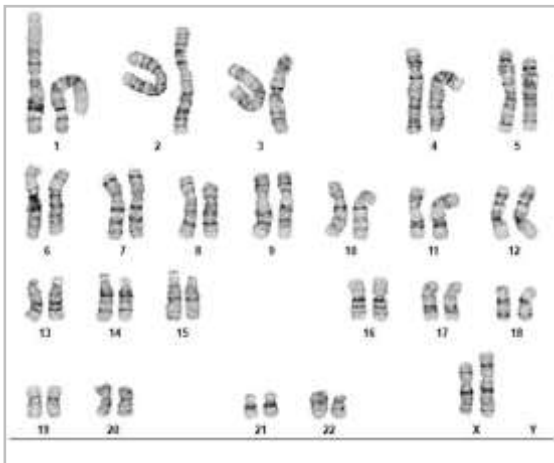
Results: 46,XX

Cell Line Sex: Female

Reason for Testing: Lot Release Testing

Investigator: [REDACTED], WiCell

Nonclonal Findings: 47,XX,+8 47,XX,+i(1)(q10) 48,XX,+X,+X



Cell: 44

Slide: G03

Slide Type: Karyotype

Total Counted: 40

Total Analyzed: 8

Total Karyogrammed: 4

Band Resolution: 400 - 475

Interpretation:

This is a normal karyotype; no clonal abnormalities were detected at the stated band level of resolution.

There are nonclonal findings, listed above, which contain chromosomal aberrations (gain of chromosome 8, 1q, and X) recurrently acquired in pluripotent stem cell cultures. An additional twenty cells were examined for these chromosomal aberrations; they were not observed. Nonclonal findings may result from technical artifact, but may be due to a developing clonal abnormality or to low-level mosaicism.

Completed by: [REDACTED], CG(ASCP)

Reviewed and Interpreted by: [REDACTED], PhD, FACMG

Date: _____ Sent By: _____ Sent To: _____ QC Review By: _____

Limitations: This assay allows for microscopic visualization of numerical and structural chromosome abnormalities. The size of structural abnormality that can be detected is >3-10Mb, dependent upon the G-band resolution obtained from this specimen. For the purposes of this report, band level is defined as the number of G-bands per haploid genome. It is documented here as "band level", i.e., the range of bands determined from the four karyograms in this assay. Detection of heterogeneity of clonal cell populations in this specimen (i.e., mosaicism) is limited by the number of metaphase cells examined, documented here as "# of cells counted".

This assay was conducted solely for listed investigator/institution. The results of this assay are for research use only. Unless otherwise mutually agreed in writing, the services provided to you hereunder by WiCell Research Institute, Inc. ("WiCell") are governed solely by WiCell's Terms and Conditions of Service, found at www.wicell.org/privacyandterms. Any terms you may attach to a purchase order or other document that are inconsistent, add to, or conflict with WiCell's Terms and Conditions of Service are null and void and of no legal force or effect.



HISTOLOGY - IHC - MOLECULAR - IMAGING

Department of Pathology and Laboratory Medicine
TRIP Laboratory (Molecular)
<https://research.pathology.wisc.edu/trip-home/>
(608) 265-9168

Short Tandem Repeat Analysis



Your Lab Partner

characterization@wicell.org
(608) 316-4145

Sample Report:

14829-STR

Sample Name on Tube: 14829-STR

115.2 ng/μL, (A260/280=2.01)

Sample Type: Cells

Cell Count: ~2 million cells

Requestor:

WiCell Research Institute

Quality Assurance Department

Receive Date: 06/24/19

Report Sent: 06/30/19

Assay Date: 06/25/19

File Name: STR 190627 wmr repeat

Report Date: 06/28/19

STR Locus	STR Genotype Repeat #	STR Genotype
FGA	16-18,18.2,19,19.2,20,20.2,21,21.2,22, 22.2, 23, 23.2, 24, 24.2, 25, 25.2, 26-30, 31.2, 43.2, 44.2,45.2, 46.2	Identifying information has been redacted to protect donor confidentiality. If more information is required, please, contact WiCell's Technical Support .
TPOX	6-13	
D8S1179	7-18	
vWA	10-22	
Amelogenin	X,Y	
Penta_D	2.2, 3.2, 5, 7-17	
CSF1PO	6-15	
D16S539	5, 8-15	
D7S820	6-14	
D13S317	7-15	
D5S818	7-16	
Penta_E	5-24	
D18S51	8-10, 10.2, 11-13, 13.2, 14-27	
D21S11	24,24.2,25,25.2,26-28,28.2,29,29.2, 30, 30.2,31, 31.2,32,32.2,33,33.2, 34,34.2,35,35.2,36-38	
TH01	4-9,9.3,10-11,13.3	
D3S1358	12-20	

Results: Based on the 14829-STR cells submitted by WiCell QA dated and received on 06/24/19, this sample (Label on Tube: 14829-STR) defines the STR profile of the human cell line JHU063i comprising 25 allelic polymorphisms across the 15 STR loci analyzed.

Interpretation: No STR polymorphisms other than those corresponding to the human JHU063i cell line were detected and the concentration of DNA required to achieve an acceptable STR genotype (signal/ noise) was equivalent to that required for the standard procedure (~1 ng/amplification reaction) from human genomic DNA. This result suggests that the 14829-STR sample submitted corresponds to the JHU063i cell line and was not contaminated with any other human cells or a significant amount of mouse feeder layer cells.

Sensitivity: Sensitivity limits for detection of STR polymorphisms unique to either this or other human cell lines is ~2-5%.

X *RMB*

Digitally Signed on 06/30/19

██████████, BA
TRIP Laboratory, Molecular

X *WMR*

Digitally Signed on 06/30/19

██████████, PhD, Director / Co-Director
UWHC Molecular Diagnostics Laboratory / UWSMPH TRIP Laboratory

Testing was accomplished by analysis of human genetic polymorphisms at STR loci. This methodology has not yet been approved by the FDA and is for investigational use only.

Acknowledge TRIP in your publications, posters & presentations. For details, see: <https://research.pathology.wisc.edu/acknowledging-trip/>
Unless otherwise mutually agreed in writing, the services provided to you hereunder by WiCell Research Institute, Inc. ("WiCell") are governed solely by WiCell's Terms and Conditions of Service, found at <https://www.wicell.org/media.acux/ca76d97c-862a-43f3-b02a-ab2d1e619100>. Any terms you may attach to a purchase order or other document that are inconsistent, add to, or conflict with WiCell's Terms and Conditions of Service are null and void and of no legal force or effect.

Native Product Sterility Report



WiCell
504 S Rosa Road, Rm 101
Madison, WI 53719

SAMPLE #: 19061805
DATE RECEIVED: 20-Jun-19
TEST INITIATED: 25-Jun-19
TEST COMPLETED: 09-Jul-19

SAMPLE NAME / DESCRIPTION:

JHU063i	DB41105	14834
JHU073i	DB41128	14835
JHU075i	DB41134	14836
JHU079i	DB41137	14837
JHU201i	DB36805	14838
JHU093i	DB41251	14839
JHU128i	DB41329	14840
JHU194i	DB41407	14841
JHU119i	DB41299	14842
JHU087i	DB41236	14843
JHU237i	DB37051	14844
JHU094i	DB41258	14845
STAN119i-192C1	DB44249	14846
STAN120i-192C2	DB44252	14847
AI08e-PAX6YFP	WB67216	14848
MCW082i-U2052	WB67222	14849
MCW111i-40002422	WB67223	14850
CBiPS-LZ6+3	WB67224	14851
NiPSC	WB67225	14852

UNIQUE IDENTIFIER: NA

TEST RESULTS:

# Tested	# Positives (Growth)	- Control
19	0	2 Negative

TEST SUMMARY:

# Samples	Media Type	Volume (mL)	Incubation Temperature (° C)	Incubation Duration (Days)
19	TSB	40	20-25	14
19	FTG	40	30-35	14

REFERENCE: Processed according to LAB-003: Sterility Test Procedure

PD #: 000053

TEST METHODOLOGY: USP - Direct Transfer

Native Product Sterility Report



COMMENTS: Sample #19061805

Reported as per packing slip.

REVIEWED BY _____ 

DATE 10 JUL 19

Specific test results may not be indicative of the characteristics of any other samples from the same lot or similar lots. This test report shall not be reproduced, except in full, without prior written approval. Liability is limited to the costs of the tests. Results applied to samples as received.



Mycoplasma Assay Report

PCR-based assay performed by WiCell

Lot Release Testing

24Jun19

FORM SOP-CH-044.03

Version B Edition 02

#	Sample Name	Result	Comments/Suggestions
1	JHU063i-DB41105 14829	Negative	Band was not seen at 270bp, indicating the absence of mycoplasma
2	Positive (+) Control	Positive	
3	Negative (-) Control	Negative	

Reported by: Brenna Anderson, Research Specialist - Cytogenetics

Reviewed by: Katie Remondini, Cell Culture Specialist

Date: _____ **Sent By:** _____ **Sent To:** _____

Unless otherwise mutually agreed in writing, the services provided to you hereunder by WiCell Research Institute, Inc. ("WiCell") are governed solely by WiCell's Terms and Conditions of Service, found at www.wicell.org/privacyandterms. Any terms you may attach to a purchase order or other document that are inconsistent, add to, or conflict with WiCell's Terms and Conditions of Service are null and void and of no legal force or effect.

A gel image is available upon request.